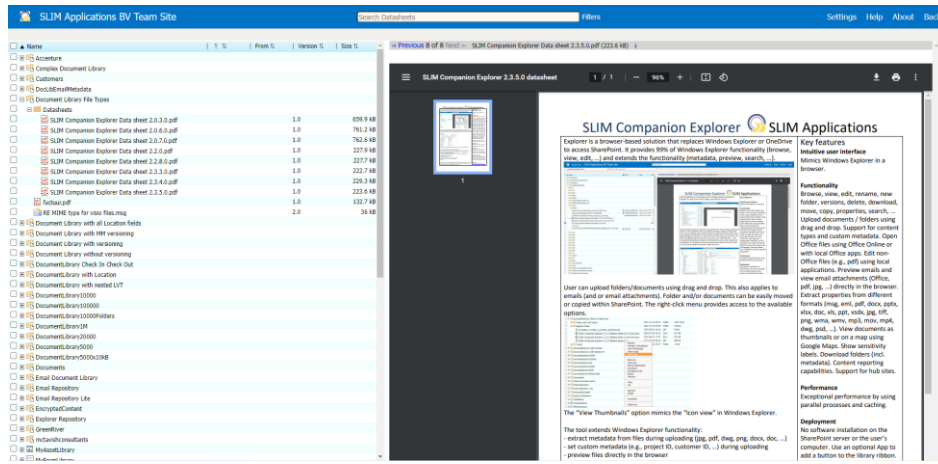


# SLIM Companion Explorer SLIM Applications

Explorer mimics File Explorer in a browser. It provides 99% of File Explorer (Windows Explorer or Finder) functionality such as browse, view, edit, ... and extends the functionality (metadata, preview, search, edit properties, ...).



User can upload folders/documents/emails using drag and drop. Folders and/or documents can be easily moved or copied within SharePoint. The right-click menu provides access to the available options.

Item Name	Created	Modified	File Type	Size	Other
DocumentLibrary Check In Check Out					
Folder with 1000 items	2021-10-16 04:13	2021-10-16 04:13	Folder	1,000 items	4 items
Regular Folder	2021-10-14 02:54	2021-10-14 02:54	Folder	4 items	
20220816_171649_12_00058_1s1030301.pdf	2022-08-23 19:16	2022-08-23 19:16	pdf	45 kB	
SLIM Companion Explorer 2.3.1.0 Release Notes 23-07-2022.docx	2022-07-29 13:13	2022-07-29 13:13	docx	217 kB	
SLIM Companion Explorer 2.3.3.0 Release Notes 12-06-2022.docx	2022-06-12 17:47	2022-06-12 17:47	docx	220 kB	
SLIM Companion Explorer 2.3.3.0 Release Notes.pdf	2022-06-19 20:12	2022-06-19 20:12	pdf	408 kB	
Target	03/00/07	03/00/07	Folder	1 item	
DocumentLibrary with Location					
DocumentLibrary with nested LVT					
DocumentLibrary10000					
DocumentLibrary100000					
DocumentLibrary1M					
DocumentLibrary20000					
DocumentLibrary5000					
DocumentLibrary5000x10KB					
Documents					
Email Document Library					
Email Repository					
Email Repository Lite					
EncryptedContent					
Explorer Repository					
GreenRiver					
MyAssetLibrary					
MyFormLibrary					

The tool extends File Explorer functionality:

- extract metadata from files during uploading (jpg, pdf, dwg, png, docx, mov, ...)
- set custom metadata (e.g., project ID, customer ID, ...) during uploading
- preview files directly in the browser
- view email attachments directly in the browser (e.g., docx, pdf, jpg, ...)
- integrates with Google Maps (plus support for geotagging any file)
- support for hub sites
- support for libraries with "Require Check Out"
- show custom columns in the Explorer tree
- search (with sorting, filtering options and save as CSV functionality)
- edit SharePoint columns

The Explorer tool is highly customizable.

## Key features

### Intuitive user interface

File Explorer in a browser.

### Functionality

Browse, view, edit, rename, new folder, versions, delete, download, move, copy, properties, search, ... Upload documents / folders using drag and drop. Support for content types and custom metadata. Open Office files using Office Online or with local Office apps. Edit non-Office files (e.g., pdf) using local applications. Preview emails and view email attachments (Office, pdf, jpg, ...) directly in the browser. Extract properties from different formats (msg, eml, pdf, docx, pptx, xls, doc, ppt, tiff, jpg, etc.). View documents as thumbnails or on a map using Google Maps. Show sensitivity labels. Download folders (incl. metadata). Content reporting capabilities. Support for hub sites.

Performance  
Exceptional performance by using parallel processes and caching.

Deployment  
No software installation on the SharePoint server or the user's computer. Use an optional App to add a button to the library ribbon.

The tool extends Windows Explorer functionality - extract metadata from files during uploading (jpg, pdf, docx, pptx, xls, doc, ppt, tiff, jpg, etc.). View documents as thumbnails or on a map using Google Maps. Show sensitivity labels. Download folders (incl. metadata). Content reporting capabilities. Support for hub sites.

The "View Thumbnails" option mimics the "icon view" in Windows Explorer. The tool extends Windows Explorer functionality - extract metadata from files during uploading (jpg, pdf, docx, pptx, xls, doc, ppt, tiff, jpg, etc.). View documents as thumbnails or on a map using Google Maps. Show sensitivity labels. Download folders (incl. metadata). Content reporting capabilities. Support for hub sites.

### Performance

Exceptional performance by using parallel processes and caching.

### Deployment

No software installation on the SharePoint server or the user's computer. Use an optional App to add a button to the library ribbon.

### Supported Systems

SharePoint Online, OneDrive for Business, Teams, SharePoint 2013 / 2016 / 2019 / SEs. Browsers: Edge, Chrome, Firefox, Opera and Safari.

### Licensing

Licensed per tranche of users.