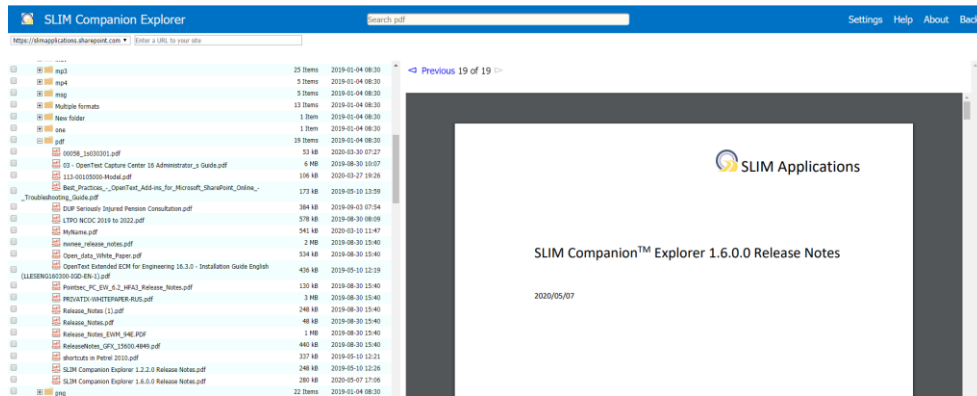
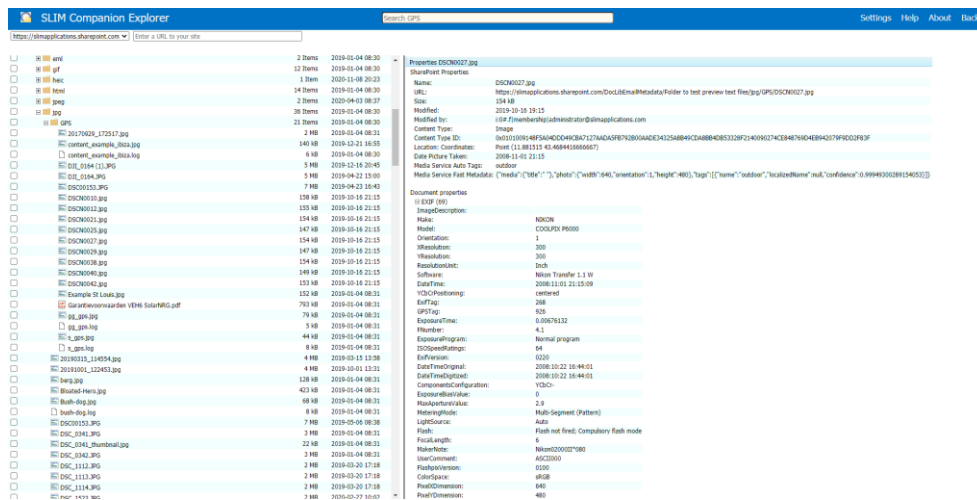


# SLIM Companion Explorer SLIM Applications

Access SharePoint as a File Explorer tree in a browser without installing any software. It is easy-to-use, easy to deploy, cost-effective and fast.



SLIM Companion Explorer supports Document libraries, Picture libraries and Asset libraries. It can handle file sizes up to 100 GB and allows migration of large data sets. Custom metadata (and Content Types) are supported, and the tool provides detailed logging. Properties in a wide set of file formats (msg, eml, pdf, docx, xlsx, pptx, vsdx, jpg, gif, png, tiff, svg, wma, mp3, wmv, mov, mp4, dwg, psd, ...) are automatically extracted and captured into SharePoint columns (e.g., capture GPS coordinates). The SharePoint columns and document properties (e.g., EXIF, XMP, ICS, IPTC) are accessible via the item's right-click menu.



Upload complete folder structures\* (e.g., 100's of GB's) from your computer, file shares, USB drives, OneDrive, Google Drive, Dropbox, Box and SharePoint 2007 / 2010 / 2013 / 2016 / 2019 and Office 365 by using drag and drop.

The tool caters for long item names, illegal characters, blocked files and keeps the original modification dates of documents. Directly upload emails (and/or attachments) from Outlook to SharePoint using drag and drop for Edge and

\*Uploading folders is not supported with Internet Explorer 11

## Key features

### Intuitive user interface

Mimics File Explorer in a browser.

### Functionality

Browse, view, edit, rename, new folder, versions, delete, download, move, copy, properties, search, ... Upload documents or folders using drag and drop. Select content types and set custom metadata. Open Office files using local Office apps. Preview emails and view/download email attachments directly in the browser. Extract properties from different formats (msg, eml, pdf, docx, pptx, xlsx, vsdx, jpg, tiff, png, wma, wmv, mp3, mov, mp4, dwg, psd, ...). Google Maps integration to view documents on a map. Set location details for documents using a map (Geotagging). Download folders (incl. metadata). Content reporting capabilities. Support for hub sites and check in / check out.

### Performance

Exceptional performance by using parallel processes and caching.

### Deployment

No software installation on SharePoint or the user's computer. Use an optional App to add a button to the SharePoint ribbon.

### Supported Systems

SharePoint Online, OneDrive for Business, SharePoint 2013, SharePoint 2016, and SharePoint 2019.

Supported browsers: Chrome, Edge, Firefox, Opera and Safari.

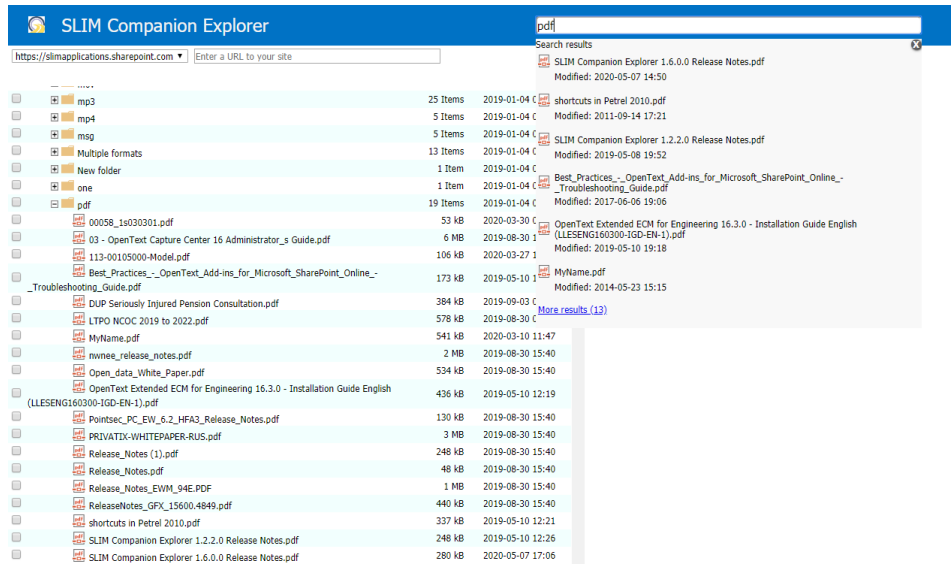
### Licensing

Licensed per tranche of users.

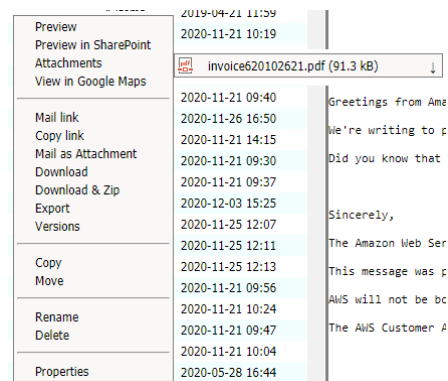
# SLIM Companion Explorer SLIM Applications

Chrome, use unique names, extract email metadata, and set custom metadata (e.g., customer ID). Identify and report on encrypted files during uploading.

The search bar (SharePoint Online only) behaves in the same way as File Explorer by allowing searching from that location and subfolders.



Preview popular file formats in your browser (e.g., msg, eml, pdf, docx, ...). View email attachments directly in the browser (or download attachments) without downloading the email.



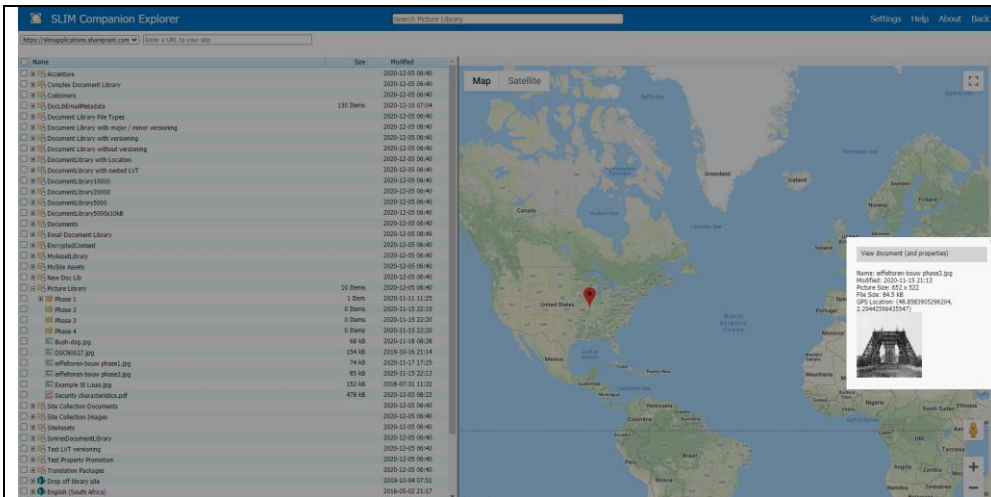
Browse zip files online and delete or move/copy items just as with File Explorer. Download very large folder structures (10's of GB's) into local zip files. Export folders/documents plus document metadata such as modified by, created by, custom metadata, ... to local zip files. Generate reports on the contents present in the source (e.g., file share) or in SharePoint. The advanced reporting mode allows users to delete document versions

(to reduce storage space used) or locate encrypted documents. Open Office files in the browser\*\* or in client applications.

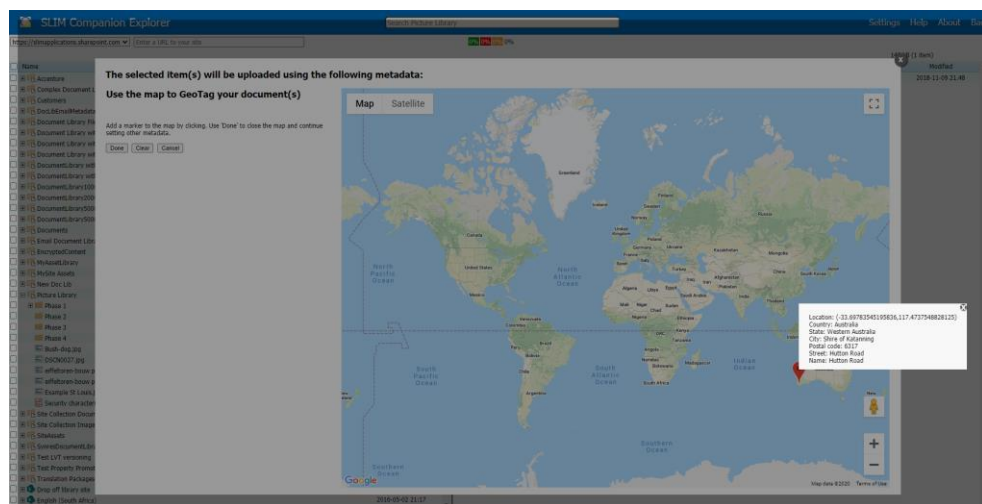
Explorer provides integration with Google Maps. Specifically, the location of documents (all items or selected items) can be visualized on a map and then be previewed.

\*\* Only supported with SharePoint Online and OneDrive for Business

# SLIM Companion Explorer SLIM Applications



The tool can automatically extract location details from files whenever present (e.g., EXIF location details). In addition, the tool can be used for geotagging by using a map to set the location details. This can be used for different file types (e.g., emails, technical drawings, ...). The address details are automatically resolved.

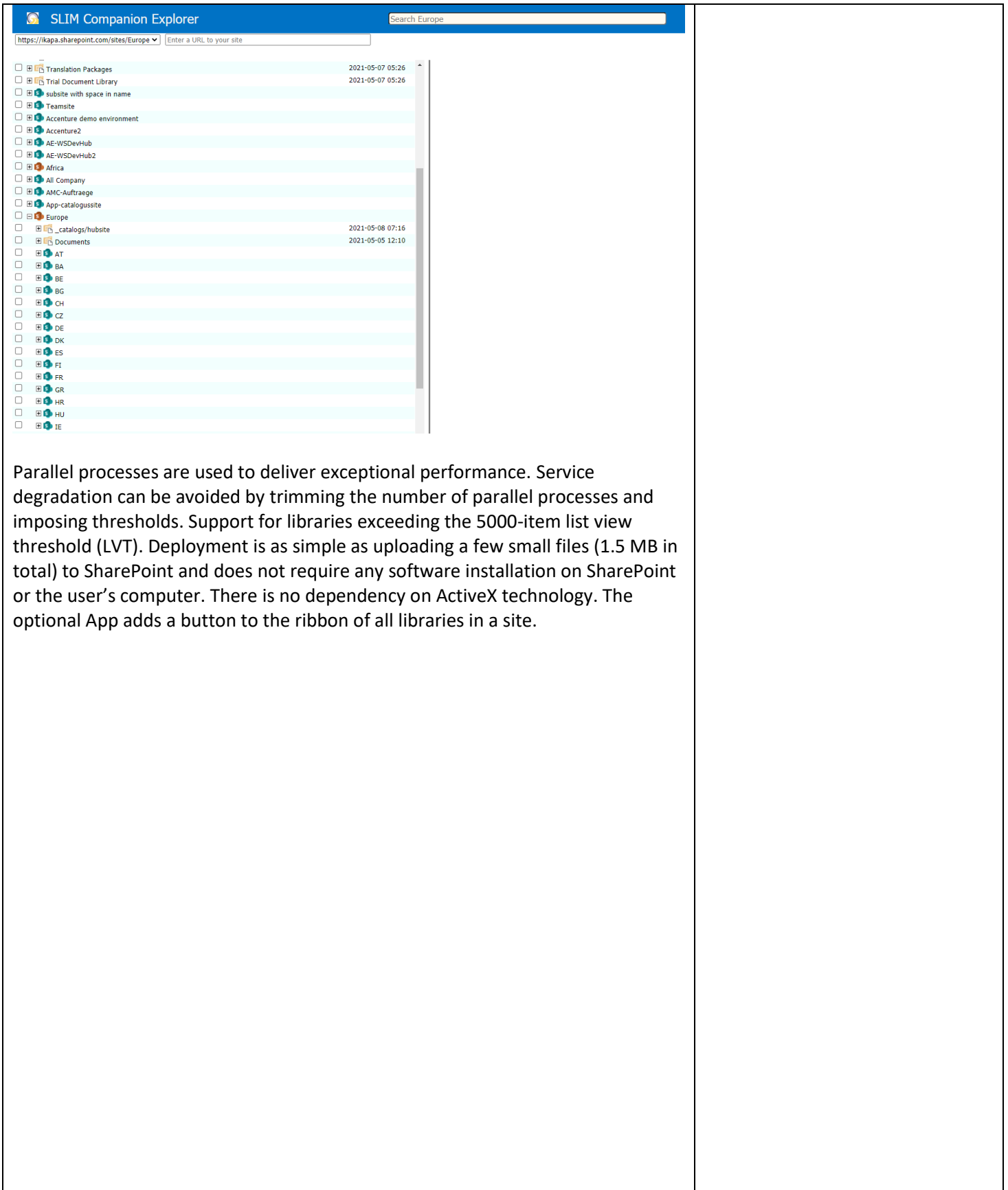


Using Google Maps with SharePoint is made easy by removing the need to add WebParts or custom scripts. The option to use Google Maps is automatically presented whenever a library contains a column of type location.

Explorer supports hub sites. Associated sites are shown with the corresponding hub sites. The search field at the top of the page caters for searching through hub sites.

SLIM Applications  
“Light-weight applications with rich functionality”  
[info@slimapplications.com](mailto:info@slimapplications.com)  
<https://www.slimapplications.com>

# SLIM Companion Explorer SLIM Applications



The screenshot displays the SLIM Companion Explorer application interface. At the top, there is a blue header bar with the application name and a search bar labeled "Search Europe". Below the header, a navigation bar shows the current site path: "https://kapa.sharepoint.com/sites/Europe". A search input field is also present with the placeholder text "Enter a URL to your site". The main content area is a list of SharePoint sites, each with a folder icon, a name, and a date. The sites listed include:

- Translation Packages (2021-05-07 05:26)
- Trial Document Library (2021-05-07 05:26)
- subsite with space in name
- TeamSite
- Accenture demo environment
- Accenture2
- AE-WSDDevHub
- AE-WSDDevHub2
- Africa
- All Company
- AMC-Auftraege
- App-catalogussite
- Europe (2021-05-08 07:16)
- \_catalogs/hubsite
- Documents (2021-05-05 12:10)
- AT
- BA
- BE
- BG
- CH
- CZ
- DE
- DK
- ES
- FI
- FR
- GR
- HR
- HU
- IE

Parallel processes are used to deliver exceptional performance. Service degradation can be avoided by trimming the number of parallel processes and imposing thresholds. Support for libraries exceeding the 5000-item list view threshold (LVT). Deployment is as simple as uploading a few small files (1.5 MB in total) to SharePoint and does not require any software installation on SharePoint or the user's computer. There is no dependency on ActiveX technology. The optional App adds a button to the ribbon of all libraries in a site.

SLIM Companion Explorer  SLIM Applications